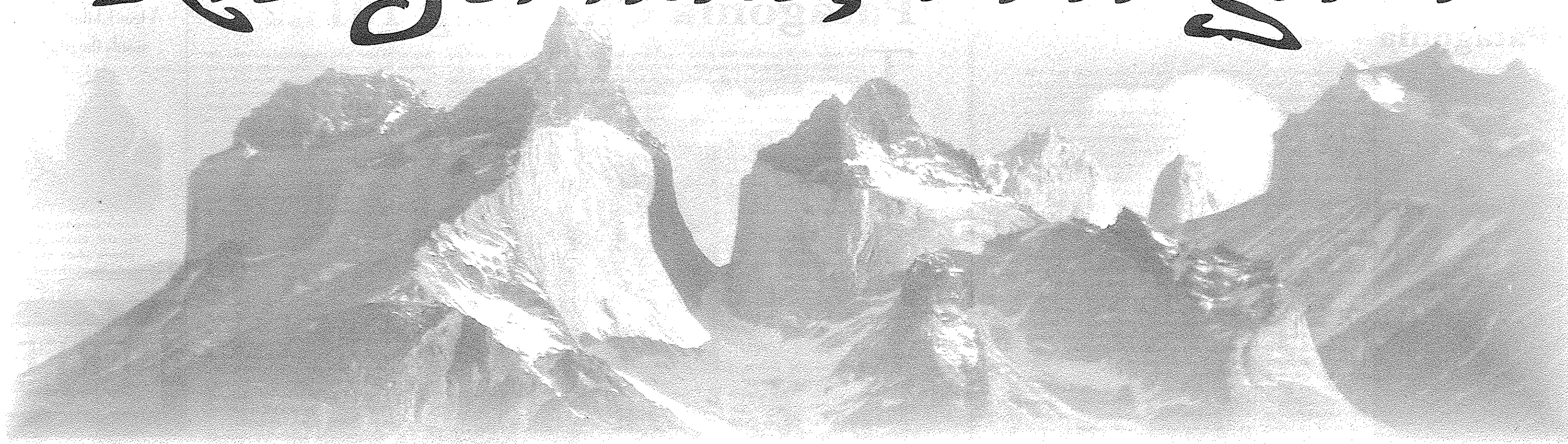


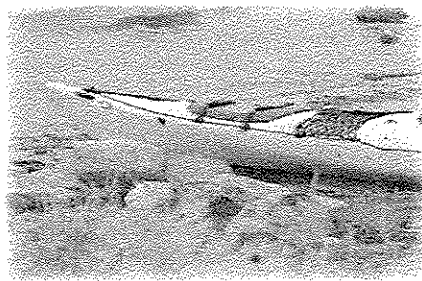
Río Serrano, Patagonia



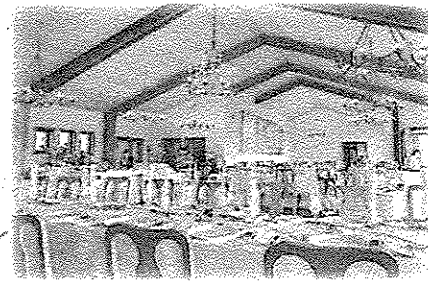
Horseback riding



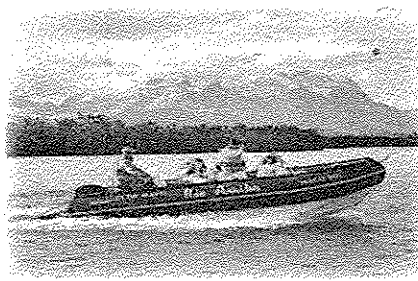
Fishing



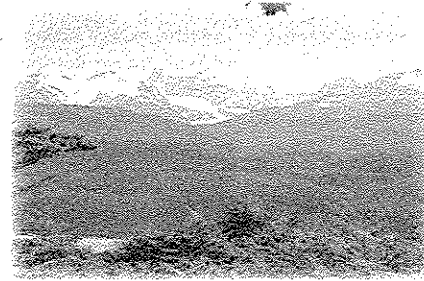
Kayaking



Hotel, dinner



Navigation



Camping



Trekking

Río Serrano in Brief

by CJ Wilson

The pace is slower in the village of Río Serrano. You feel it when you get off the boat, step out of the car, or walk through the valley. Although Río Serrano is located literally on the edge of Torres del Paine National Park, it's a world away from any sense of "beaten track," traffic, or sense of urgency. Bordered by beautiful Río Serrano itself, the settlement consists of a few families, who have farmed there for generations, and a handful of services catering to tourists.

The views are jaw-dropping. The Paine Massif dominates, but the valley is literally surrounded by mountains, many of which are snow-covered year round. It's a stunning place to spend a few hours or several days, and enjoy the adventures of your choice: horseback riding, boat rides, sea kayaking, trekking, bird-watching, fishing, or just walking along the river and through the valley.

Once part of the enormous Asociación Explotadora de Tierra del Fuego, and later the huge Estancia Río Paine, this land has been used for herding animals since white man arrived to the region. The Astorgas family has inhabited the valley for at least four generations, starting as caretakers for larger estates and later becoming landowners themselves.

After the large estancias were broken up, in the land reform of the 1960s under President Frei, men could apply for small portions of land. The government often gave them animals to start their herd. Men with wives and children were given priority over those who already knew the nature of herding and estancia life. (In fact, this happened all over the region and meant that many new estancias failed, for lack of experienced workers.) And, so, Señor Astorgas went from being a caretaker for a wealthy landowner to the owner of a smaller estancia.

Life since then has changed. Before the roads reached Serrano, supplies were brought in on horseback across the pampas. Eventually the northern road to the park reached Río Serrano, but there was no bridge for vehicles to cross the river. Until recently supplies had to be carried across the river via a footbridge (which washed away in a flood) or by rafts, pulled by rope. This is how the materials arrived to Serrano to build the first hotels. On more than one occasion, the uneven load caused the raft to tilt, dumping its cargo (vehicle and driver!) into the river.

In 1984, Cristian Bore, a mechanical engineer retired from the navy, first came to Río Serrano. He fell in love with the valley, eventually bought land, and spent weekends there while working in Punta Arenas. In 1994, he began construction on a cabin, and built a raft to carry supplies across the river, building cabañas and later Hotel Tyndall, which were the beginning of tourism in Río Serrano.

Today Río Serrano retains its peaceful character, even as it expands its tourist facilities, with new modern camping facilities, expanding hotels, and more activities being offered. Options for boat rides, kayak trips, horseback riding, tours of the Park, and other activities based in the valley are growing every year. But the pace still remains tranquil, or as they say here, "tranqui."

Kayaking

Aquanativa
www.aquanativapatagonia.com
Eberhard 161, Puerto Natales
(56-61) 414143
info@aquanativapatagonia.com

Baguales Group
www.bagualesgroup.com
Barros Arana 66, Puerto Natales
(56-61) 412654
info@bagualesgroup.com

Bella Patagonia
www.bellapatagonia.com
Barros Arana 160, (56-61) 412489
info@bellapatagonia.com

Blue Green Adventures
www.bluegreenadventures.com
Bulnes 1200, Puerto Natales
(56-61) 410009
info@bluegreenadventures.com

Fortaleza
www.fortalezapatagonia.com
Tomas Rogers 235, Puerto Natales
(56-61) 410595
explore@fortalezapatagonia.com

Indomita

www.indomitapatagonia.com
Bories 206, Puerto Natales
(56-61) 414525
indomitakayak@hotmail.com

KallpaMayu
www.aventurakallpamayu.com
Bulnes 495, (56-61) 413318
info@aventurakallpamayu.com

Onas
www.onaspatagonia.com
Blanco Encalada 211, Puerto Natales
(56-61) 614303
reservas@onaspatagonia.com

Rutas Patagonia
www.rutaspagonia.cl
Blanco Encalada 353, (56-61) 613874
info@rutaspagonia.cl

Serrano Aventura
http://serranoaventura.blogspot.com
Arturo Prat 739, Puerto Natales
(56-61) 410100
serranoaventura@yahoo.com

Tu Travesia
www.tutravesia.com
Bulnes 37, (56-61) 415747
info@tutravesia.com

Motorized Boat Rides

21 de Mayo (Río Arriba)
www.chileaustral.com/21demayo
Eberhard 560, (56-61) 614420
21demayo@chileaustral.com

Punta Alta/Outboard Patagonia
www.puntaalta.cl
Blanco Encalada 244, (56-61) 410115
jvera@puntaalta.cl

Fishing

Baguales Group
www.bagualesgroup.com
Barros Arana 66, (56-61) 412654
info@bagualesgroup.com

Fishing Patagonia
www.fishing-patagonia.com
Bulnes 100, Puerto Natales
(56-61) 410349

Turismo Viento Sur
www.vientosur.com
414 Baquedano, (56-61) 613842
agencia@vientosur.com

Horseback Riding

Blue Green Adventures
www.bluegreenadventures.com
Bulnes 1200, (56-61) 410009
info@bluegreenadventures.com

Estancia Vista al Paine
Lote AR2, Río Serrano, Radio: 150.900
Cel. (09) 77 318157
info@horseridingpatagonia.com

Transfers

El Mochilero 97
Radio frequency: 151.100
(56-61) 414890

Estancia Vista al Paine
Lote AR2, Río Serrano, Radio: 150.900
Cel. (09) 77 318157

Transfers Cordillera Paine
Segundo Avendaño, Radio: 150.200
cordillera_p@hotmail.com

Via Terra Transfers
Bulnes 632, (56-61) 410775
viaterra@viaterra.cl

Lodging

Cabañas del Paine
www.cabanasdelpaine.com
(56-61) 210179
reservaspuq@cabanasdelpaine.cl

Camping Río Serrano (Los Andes)
Across the footbridge in Río Serrano
Cel. (09-2) 1960447/1960448
rodrigosouto@msn.com

Estancia Vista al Paine
Lote AR2, Río Serrano, Radio: 150.900
Cel. (09) 77 318157
info@campingtorresdelpaine.com

Hosteria Lago del Toro
www.lagodeltoro.com
(56-61) 412481
hosteria@lagodeltoro.com

Hotel Lago Tyndall & Cabañas Tyndall
www.hoteltyndall.cl
(56-61) 614682
reservas@hoteltyndall.cl

Hotel Río Serrano
www.hotelrioserrano.cl
Cel. (56) (2) 889 1137
info@rioserrano.com

